



FARM-SERVANT®

www.farm-servant.de

Table of Contents

FARM-SERVANT®

Introduction	2 - 4
Mode of action	5 - 6
Technical data of KiK / ECO Line / PRO Line	7
Features and functions of KiK / ECO Line / PRO Line	8
Details	9 - 10
FARM-SERVANT® PRO Line in use	11

FARM-SERVANT® FS120KiK

Introduction	12 - 14
Additional equipment	15 - 16
FARM-SERVANT® KiK in use	17

FARM-SERVANT® Sand Spreader

18 - 21

FARM-SERVANT® Collection Tank FS225SW

22 - 25



FARM-SERVANT® is the unique, patented turnkey solution for automated mucking out of fenced-in pastures, paved horse paddocks, trails and storage areas.

FARM-SERVANT®

MULCHING - MUCKING OUT - SWEEPING

FARM-SERVANT®

FARM-SERVANT® is an attachment for tractors or loaders. The solution automates mucking out in areas such as paved horse paddocks, fenced-in pastures, trails and storage areas, regardless of the weather.

FARM-SERVANT® is available in a range of models and widths for rear and front operation. Specially developed rubber lips sweep up the manure and transport it to the collection tank. The tank can be easily emptied onto a dry stack or into a manure container.

Using FARM-SERVANT® every day makes staff management on the farm more effective. When considered as part of the overall modernisation concept for any horse farm, FARM-SERVANT® contributes to a higher quality of life for stall operators and staff

For best results, use the FARM-SERVANT® on the following terrain:

- Pastures and unpaved trails
- Concrete, paving, asphalt
- Paddock mats
- Artificial turf
- Crushed aggregate

FARM-SERVANT® PRO benefits

- Options for customised fitting
- Double ground rollers
- Gear train arranged inside
- Separate feed flap for the collection tank and tank enlargement
- Load capacity over 750 litres
- Replacement unit in case of failure and warranty extension to 5 years*

We are authorised sales partners for HIT Active Stable mats.

***available with separately purchased service agreement and according mandatory annual check up**

Thanks to its manual float position, FARM-SERVANT® as an implement can react to a wide range of terrains (hills, embankments, small ditches, etc.) independently of the pulling or pushing vehicle. It can compensate by approx. 25 cm in any direction.

The FARM-SERVANT® chassis is designed to ensure effortless movement – even when it is loaded. The wheels feature fully independent suspension and can rotate 360°. This enables FARM-SERVANT® to manage tight radii and places that are full of twists and turns.

FARM-SERVANT® PRO models

Front operation

Working width: 1.3 m; 1.8 m; 2.0 m

Rear operation

Working width: special design on request

FARM-SERVANT® ECO models

Front operation

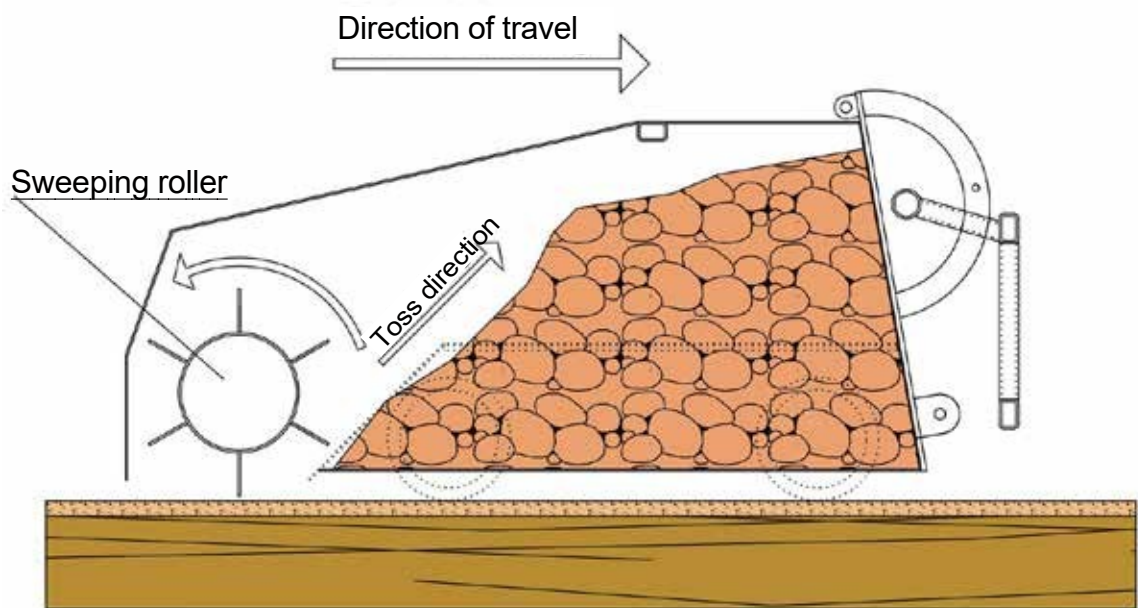
Working width: 1.3 m; 1.8 m; 2.3 m



FARM-SERVANT®

MULCHING - MUCKING OUT - SWEEPING

Patented mode of action



FARM-SERVANT® Patent

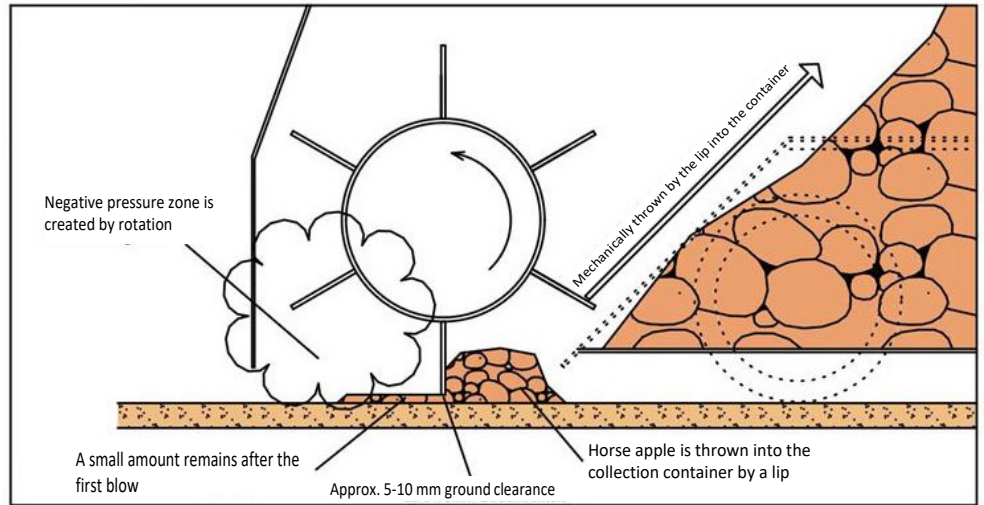
The special mode of action of FARM-SERVANT® has been patented. It enables a particularly fast and clean mucking out of a number of surfaces – paddocks, artificial turf and pastures, concrete and paved areas



With its 6 lips made from fabric-reinforced, high-performance rubber, the sweeping roller has a hydraulic drive.

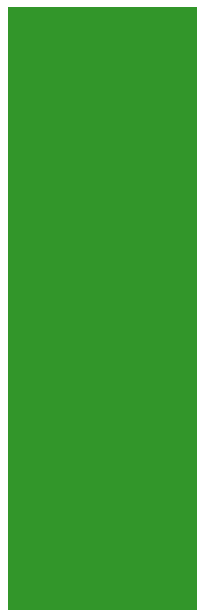
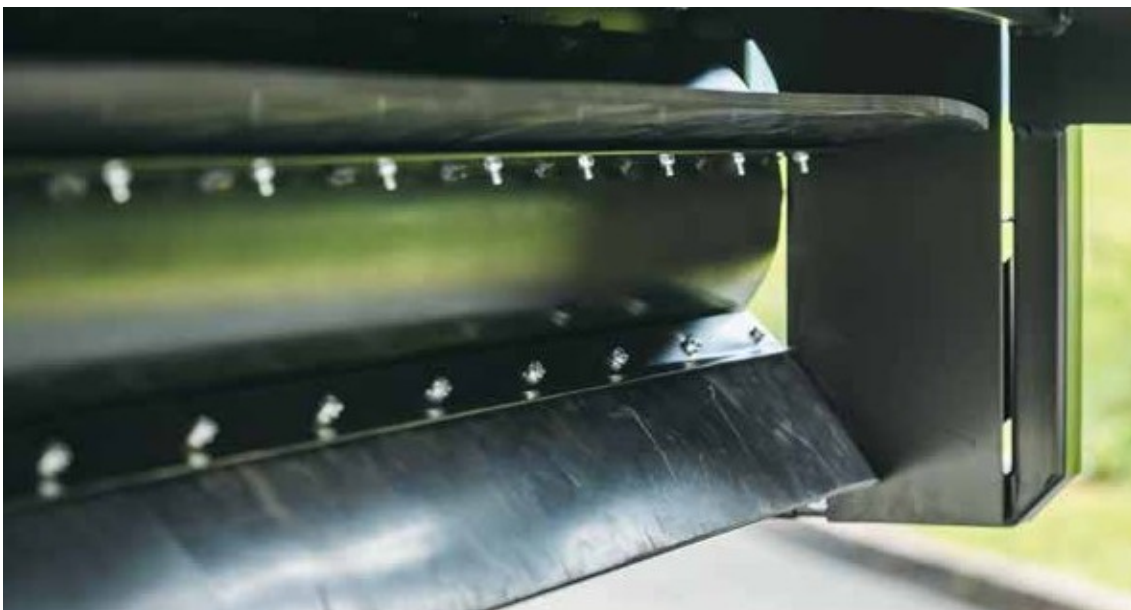
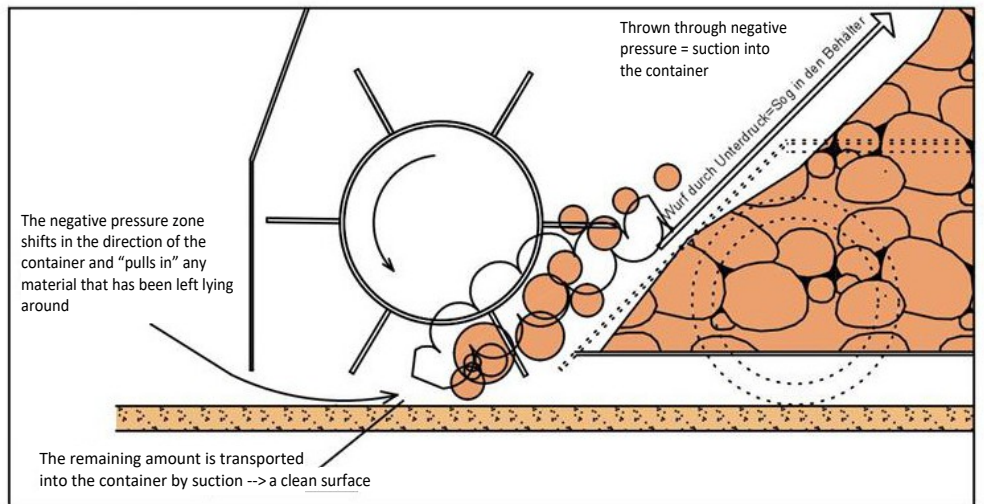
1st lip contact

When the first lip contacts the manure, a vacuum zone is created. The rubber lip tosses the droppings into the collection tank.



2nd lip contact

When the next lip contacts the manure, the vacuum zone shifts towards the collection tank, pulling the rest of the manure along and moving it into the tank.



Technical data

FARM-SERVANT® Unit Series

FARM-SERVANT® KiK

FARM-SERVANT® ECO (front operation)

FARM-SERVANT® PRO (front operation)

Unit	Width	Length	Working width	Volume	Empty weight	Recom. payload*	Permitted total weight**
FS120KiK 250L	1,650 mm	2,200 mm***	1,200 mm	250 L	385 kg		650 kg
FS120Kik 400L	1,650 mm	2,650 mm***	1,200 mm	400 L	405 kg		950 kg
FS130FA eco	1,300 mm	1,500 mm	1,150 mm	400 L	410 kg	700 kg	1,000 kg
FS180FA eco	1,800 mm	1,500 mm	1,650 mm	550 L	530 kg	900 kg	1,200 kg
FS230FA eco	2,300 mm	1,500 mm	2,450 mm	700 L	650 kg	1,200 kg	1,400 kg
FS130FA	1,300 mm	2,050 mm	1,150 mm	700 L	720 kg	1,100 kg	1,500 kg
FS130FA-K	1,300 mm	1,550 mm	1,150 mm	450 L	620 kg	800 kg	1,200 kg
FS180FA	1,800 mm	2,050 mm	1,650 mm	1,000 L	820 kg	1,600 kg	1,900 kg
FS180FA-K	1,800 mm	1,550 mm	1,650 mm	750 L	730 kg	1,200 kg	1,600 kg
FS200FA	2,000 mm	2,050 mm	1,850 mm	1,400 L	850 kg	1,800 kg	2,300 kg
FS200FA-K	2,000 mm	1,550 mm	1,850 mm	900 L	760 kg	1,400 kg	1,800 kg

* Minimum lift capacity of the loader = recommended payload

** Permitted total weight

(On the basis of materials that weigh approx. 1 kg per litre.

Example: horse droppings with 65% moisture content)

*** Incl. tractor

Features and functions

FARM-SERVANT® Unit Series

FARM-SERVANT® KiK

FARM-SERVANT® ECO (front operation)

FARM-SERVANT® PRO (front operation)

Features	FS KiK	FS FA ECO	FS FA PRO
patented active floating position	X	X	X
patented ground rollers	-	X	X
double ground rollers	-	-	X
patented mode of action for dirt absorption	X	X	X
48h service for spare parts dispatch	X	X	X
replacement unit in case of failure	-	-	X
2-year warranty for load-bearing steel components	X	X	X
1 year warranty for hydr./electr. components	X	X	X
warranty extension to 5 years*	-	-	X
mechanical emptying of tanks	-	X	X
separate feed flap in the tank	-	-	X
gear train arranged inside (space-saving)	-	-	X
options for customised fitting	X	-	X
tank enlargement	X	-	X
acid-resistant sweeping lips	X	X	X
high-quality powder coating	X	X	X
load capacity of more than 750 litres	-	-	X
protection against incorrect operation	X	X	X
hydraulic non-return valves	-	X	X
hydraulic lowering brake valves	-	X	X
hydraulic flow control valve	-	X	X
hydraulic pressure control valves	-	X	X
tool holders	X	X	X
customised device connections	X	X	X
customised hydraulic connections	-	X	X
on-site instruction in the use of the equipment	X	X	X
payback period	medium	fast	very fast
operation	quite easy	easy	very easy
time saving	medium	medium	very high
manoeuvrability	high	medium	medium - high
maintenance interval	medium	medium	medium
maintenance costs	low	medium	medium
susceptibility to wear	medium	medium	low
additional fuel consumption	medium	low	low

*available with separately purchased service agreement and according mandatory annual check up

FARM-SERVANT®

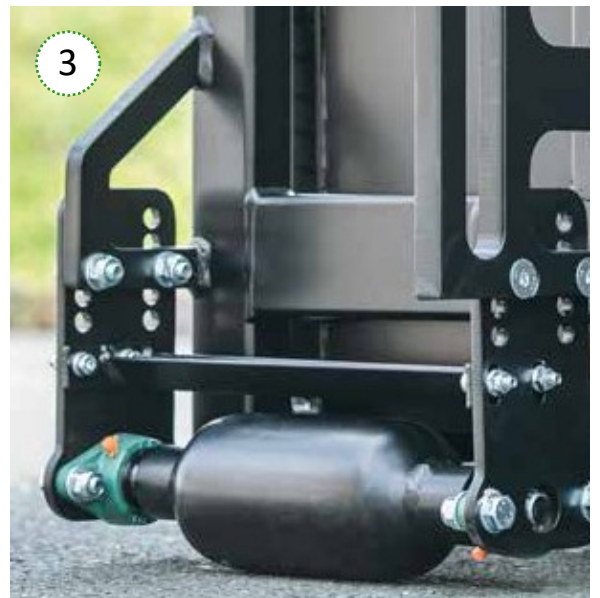
MULCHING - MUCKING OUT - SWEEPING

FARM-SERVANT PRO®

The innovation lies in the detail

- 1 Sweeping lip made of fabric-reinforced and acid-resistant high-performance rubber
- 2 Float position
- 3 Sensing rollers
- 4 Tool holder
- 5 Sweeping roller quick changeover unit
- 6 Hitch for all common loader types
- 7 Infinite height adjustment plus a selection of 3 basic levels
- 8 Valve for infinitely adjustable setting of roller speed





FARM-SERVANT®

MULCHING - MUCKING OUT - SWEEPING

FARM-SERVANT® PRO in use





FARM-SERVANT® FS120KiK

is a unique solution for mechanical mucking out of small horse paddocks, pastures, trails and storage areas.

FARM-SERVANT®

MULCHING - MUCKING OUT - SWEEPING

FARM-SERVANT®

MULCHING - MUCKING OUT - SWEEPING

The FARM-SERVANT® FS120KiK Unit is a handy machine with numerous areas of use. It automates mucking out of small paved horse paddocks, fenced-in pastures, trails and storage areas, regardless of the weather. The KiK is equipped with power steering for comfortable and effort-saving operation.

For best results, use the FARM-SERVANT® KiK on the following terrain:

- Paddock mats
- Pastures and unpaved trails
- Crushed aggregate
- Concrete, paving, asphalt
- Artificial turf

FARM-SERVANT® KiK benefits

- Simple operation & at least 50 % time saving
- Bespoke production & rugged design
- Float position & height-adjustable sweeping roller
- Chassis with 360° rotating wheels

We are authorised sales partners for HIT Active Stable mats.

Technical data (excerpt):

- FARM-SERVANT® collection tank: width 1,200 mm
- Empty weight: approx. 220 kg
- Single load: 600kg
- Negative pressure flap
- Chassis with 360° rotating wheels
- Universal hitch for mounting on PTO shaft
- Mechanical float position device
- Roller holder quick change system
- Height adjustment for the terrain
- Support frame with hinge
- Stiffening frame for stabilisation when loaded
- Separation plates to secure filled material against slipping
- Ground roller/impact roller
- Mounting box for hydraulic add-on components
- Surface: dip coated, black matt
- Sweeping roller with 6 collecting lips made of fabric-reinforced high-performance rubber
- Capacity: approx. 250 litres
- Holder for 2 tools
- Electric start motor
- Speed (stepless): Forward 0-7.5km/h; Reverse 0-3.5km/h
- Slope capability: Standard = 25° in 4 directions (20° Honda) with ASC up to 45° sideways possible (ASC = Assisted Slope Control)
- Transmission: 2 independent hydrostatic wheel drives with stepless forward and reverse gears
- Steering: Power Assisted Steering Zero Radius (PAS = Power Assisted Steering)
- Track gauge: 95/98cm depending on version
- Wheels: pneumatic tyres 18 x 9.5-8
- Dimensions of basic machine incl. tractor (max. working width = 1,200 mm): FS120KiK 250 litres: 1,650 x 2,200 mm

FARM-SERVANT®

MULCHING - MUCKING OUT - SWEEPING

FARM-SERVANT® FS120KiK

The innovation lies in the flexibility.

Additional equipment

FARM-SERVANT®

FS KiK steep slope version
with 406Nm

FARM-SERVANT®

FS KiK tank enlargement to
400 litres

FARM-SERVANT® FS
KiK Portal Mower



FARM-SERVANT®
FS KiK Snow Blower



FARM-SERVANT®
FS KiK Snow Plough Blade



FARM-SERVANT®
FS KiK Sickle Mulcher



FARM-SERVANT®
FS KiK Belt Rake / Hay Tedder



FARM-SERVANT®
FS KiK Weed Brush



FARM-SERVANT®
FS KiK Weed Brush

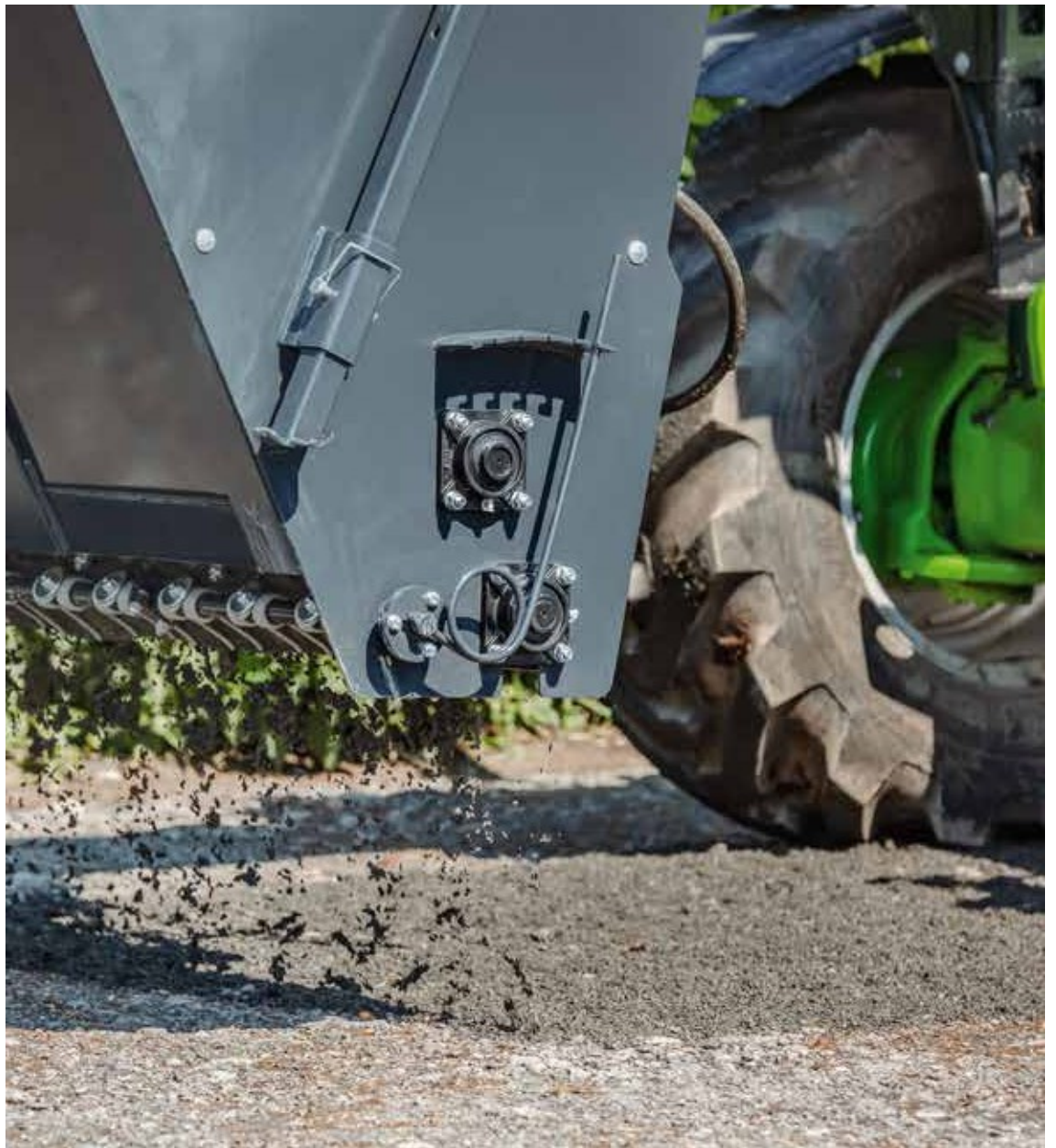


FARM-SERVANT®

MULCHING - MUCKING OUT - SWEEPING

FARM-SERVANT® KiK in use





FARM-SERVANT® SAND SPREADER

Hydraulically driven spreader to spread sand and gravel, especially for sanding and re-sanding

FARM-SERVANT®

MULCHING - MUCKING OUT - SWEEPING

FARM-SERVANT[®]

MULCHING - MUCKING OUT - SWEEPING

The hydraulically driven SAND SPREADER is an implement for tractors or loaders that automates spreading of non-adhesive materials (sand and gravel) with a grain size of between 0 and 8 mm at infinitely adjustable spreading speed. Crushing and spreading rollers arranged one above the other ensure a uniform spreading pattern. To protect the rollers, special protective grids have been integrated.

The unit is offered in various model versions and widths. The sand is spread by a hydraulic motor. For this, the loader or tractor requires the following:

- 1 double-acting hydraulic circuit
- 140 - 210 bar oil pressure
- 40 - 80 l/min oil flow rate

It is possible to adapt the oil pressure and flow rate on the SAND SPREADER to the specific local conditions.

SAND SPREADER benefits

- Simple operation & at least 50 % time saving
- Bespoke production & rugged design
- Suitable coupling hooks for all loader and tractor types
- Suitable hydraulic connections for all loader and tractor types
- Easy installation of a faster transmission
- Feet for safe parking of the spreader

Technical specifications of the models available

Type	Width	Empty weight	Volume	Coupling hook/ hydraulic connection
FS120STS	1,200 mm	380 kg	0.54 m ²	Coupling hooks and hydraulic connections are included. Details like the type of the loader or tractor shall be provided by the customer.
FS140STS	1,400 mm	400 kg	0.63 m ²	
FS160STS	1,600 mm	430 kg	0.72 m ²	
FS180STS	1,800 mm	455 kg	0.81 m ²	
FS200STS	2,000 mm	475 kg	0.90 m ²	
FS240STS	2,400 mm	495 kg	1.08 m ²	

SAND SPREADER models

Front operation - working width:

1.2 m; 1.4 m; 1.6 m; 1.8 m; 2.0 m; 2.4 m







FARM-SERVANT® COLLECTION TANK

Mechanical collection tank equipped with chassis and flap for collecting dirt and waste materials

FARM-SERVANT®

MULCHING - MUCKING OUT - SWEEPING

FARM-SERVANT®

MULCHING - MUCKING OUT - SWEEPING

The FARM-SERVANT® collection tank is a stable trolley for collecting dirt and waste materials that can accumulate in an equestrian facility. It is suitable for all commercially available front loaders equipped with a Euro hitch and can thus be emptied easily. Thanks to its large capacity and high-quality workmanship, the collection trolley reliably facilitates daily dirt and waste disposal at the stud or riding facility. With a smooth-running chassis made of heavy-duty castors, the tank can be easily moved even when loaded.

Technical data:

- profile tube frame 60 x 60 x 2 mm
- sheet steel bottom with 2 mm thickness
- chassis made of heavy duty castors
- flap with hinges and fasteners
- surface finish: powder coating

FARM-SERVANT® COLLECTION TANK benefits

- Easy operation
- Robust workmanship
- High-quality matt black powder coating of the tank
- Driving speed of up to 8 km/h
- Euro hitch

FARM-SERVANT® Collection Tank FS225SW

Size (L x W x H): 2,250 x 1,250 x 1,500 mm

Capacity: approx. 3 m³

Dead weight: 380 kg



GERMANY



UNITED KINGDOM



FARM-SERVANT[®]

DEUTSCHLAND - GERMANY

D-08297 Zwönitz, Paradiesweg 1

Phone: +49 (0) 1727046013

Mail: info@farm-servant.de

Web: www.farm-servant.de